

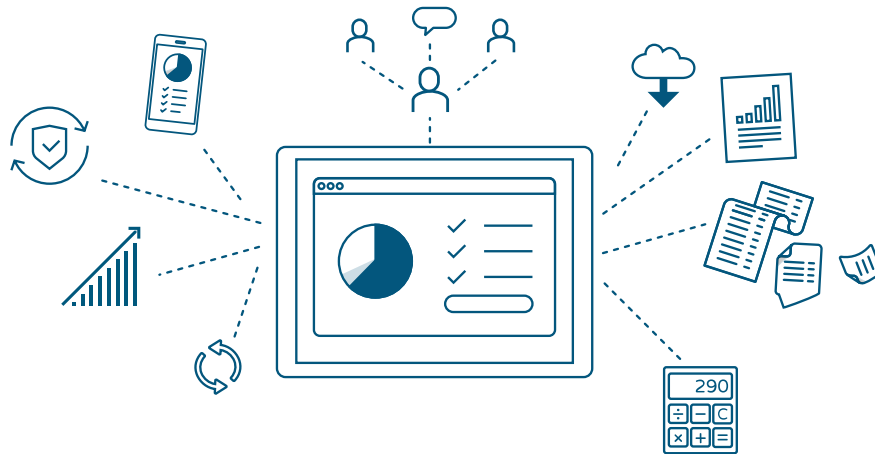
Nexben: A Guide

FOR EMPLOYERS



nexben[™]

What is Nexben?



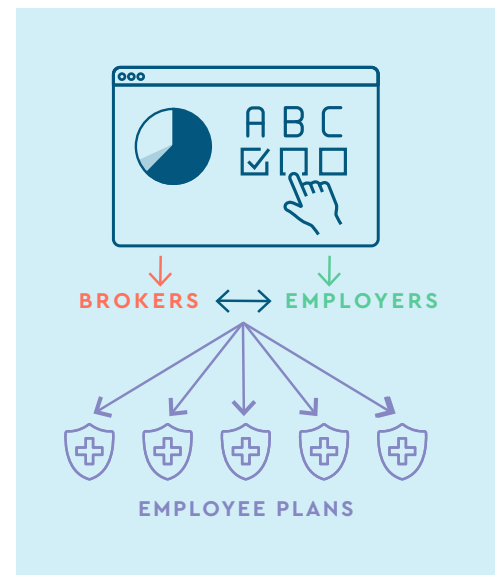
Imagine having the ability to shop for health insurance the same way you shop for other products online. You search for the product, read a straightforward description, decide which size fits best, and add it to your cart. It's a simple process, one that people execute daily. Enter Nexben: a modern, digital and end-to-end insurance marketplace for brokers, employers and employees that takes care of everything. Nexben facilitates the entire process of searching and choosing health insurance: from quoting and proposing to enrolling and billing.

With Nexben, an employer or HR representative can compare quotes from over one million options from insurance carriers, choose a health plan within an all-in-one portal, and control costs for their company. With Nexben, HR representatives can work directly with brokers to compare carrier quotes, allowing you to focus on what matters most: choosing what best fits your employees. As health care costs continue to rise, employers are looking for cost-effective solutions for themselves and their employees. Nexben helps carriers, brokers, employers and employees interact in real-time and makes the selection experience both easier and more cost-effective.

How does Nexben work?

First, the broker seamlessly generates multi-carrier quotes including products from medical, dental, vision, disability income and life insurance providers, plus HSAs and HRAs. All of the necessary documents are captured in one place, and accessible at any time.

Then the broker develops a proposal for the employer that includes a generated side-by-side comparison of plans for employees. Together, the broker and employer are able to make real-time changes to the proposal, running any combination of carrier products, plan types and contribution strategies. Exact quotes from multi-carriers in the marketplace can be provided instantly, which gives the employer the ability to compare options directly and choose which plans they feel will fit their employees the best. This proposal can be easily converted into a paperless Nexben enrollment and then the employee can begin the selection process.



Employees can use their personalized online portal to compare plans and choose which they'd like to enroll in. The all-in-one portal allows for employees to browse the options, select which they prefer, and enroll right away with an eSignature. All plan documents and descriptions are available on the platform, and can be accessed at any time.

Once the employee is enrolled, the employer can view, pay and track employee's premiums using the Nexben dashboard. This dashboard eliminates unreliable paperwork and also gives the employer the opportunity to manage administrative tasks and allows for adjustments to be made in real-time.

Everything you need to know about Nexben

FOR EMPLOYERS

NEXBEN BY THE NUMBERS

1st

end-to-end online insurance marketplace

1 million+

product rates from major medical and ancillary carriers

50

the number of states Nexben is available in

TAILOR EMPLOYEES' PLANS TO FIT NEEDS



Compare insurance plans side-by-side to make more informed decision



Select the best plans for employees who then make the final enrollment decision



Provide a personalized online portal for employee ease of enrollment

CONTROL COSTS AND SAVE TIME



Explore all available plan options and budget scenarios in a one-stop-shop marketplace



Review current offerings and compare combinations of carriers, plans and costs



Select a benefit package that satisfies both employees and the bottom line

LIMIT PAPERWORK AND PROCESSES FOR HR REPRESENTATIVES



Use the comparison-shopping tool to ease workload



Eliminate the need for paper applications and enrollment information



Enroll and bill employees without leaving the platform



Store and share important documents



Make administrative adjustments to an employee's profile in real-time

+ Get HSA and ACA administration, monitoring and reports, ensuring accurate and timely compliance

FAQs from employers about Nexben:

Q: What types of plans are accessible for enrollment on Nexben?

A: The Nexben platform includes options for medical, dental, vision, disability income and life insurance. You can shop Medicare, individual and small group plans. You can also access Trovia, the premier ICHRA marketplace solution, to create the perfect health benefit package.

Q: What makes Nexben an end-to-end solution?

A: The Nexben technology platform drives the Nexben marketplace. You can research, run multi-carrier comparisons, plan types and budget scenarios to find the right fit. From there you can select a health benefit package, roll seamlessly into enrollment, and manage the carrier payment process—all from the one-stop Nexben platform.

Q: Are the carriers available within Nexben limited?

A: Simply put: no. There are more than 1 million product rates from both national and local carriers available, and using data and side-by-side comparisons, you're able to quickly compare plans and choose the best options for your company. The platform is scalable, meaning additional carriers and products are easily added as they become available.

Q: Can I view and manage employee profiles within the platform?

A: Yes, you can make necessary administrative changes to employee profiles in real-time. Employees can also update their own profiles, keeping them accurate and up-to-date.

Q: Do I have to enroll employees?

A: No, employees can enroll directly in health benefits in Nexben and use the eSignature feature to bind coverage. The employee-friendly, personalized online portal simplifies the plan comparison and enrollment process.



nexben™

This material is for general information purposes only. This material is not to be considered or taken as legal, tax, benefit, or human resources advice. Regulations change over time and can vary by location and employer size, among other factors. Nexben and Trovia do not guarantee any form of access, eligibility, or coverage. Consult a licensed broker, human resources certified expert, or attorney for specific guidance. Nexben and Trovia services are subject to terms and conditions.

Trovia™ and Nexben™ are trademarks of Nexben, Inc.

©2020 Nexben, Inc. All rights reserved. N-14ER_11.05.20